



# TYPE APPROVAL PROGRAM

GUIDANCE FOR EQUIPMENT PROVIDERS  
FOR MARINE AND OFFSHORE  
INSTALLATIONS

May 2026



---

# TABLE OF CONTENTS

<b>INTRODUCTION</b>	<b>1</b>
<b>PRODUCT DESIGN ASSESSMENT – TIER 2</b>	<b>2</b>
<b>DUPLICATE PDA (PDA-DUP)</b>	<b>2</b>
<b>MANUFACTURING ASSESSMENT (MA) – TIER 3</b>	<b>3</b>
Scope of the Audit	3
Issuance and Validity	3
Integration with Type Approval	3
Request Process	3
<b>PRODUCT QUALITY ASSURANCE (PQA) – TIER 4</b>	<b>4</b>
Eligibility and Enrollment	4
Audit Structure	4
Approval and Maintenance	4
Request Process	4
<b>UNIT CERTIFICATION – TIER 5</b>	<b>5</b>
Design Plan Review	5
In-Plant Surveys and Testing	5
Worldwide Client Number	5
<b>NEW PDA APPLICATION PROCESS</b>	<b>6</b>
Optional – PDA-DUP	6
<b>PDA REVALIDATION PROCESS</b>	<b>7</b>
<b>PDA REVISION</b>	<b>8</b>
<b>VALIDITY OF CERTIFICATES</b>	<b>9</b>
<b>WORLDWIDE CLIENT NUMBERS (WCN)</b>	<b>9</b>
<b>ABS MYFREEDOM™</b>	<b>9</b>
<b>KEY BENEFITS OF ABS TYPE APPROVAL</b>	<b>9</b>
<b>LIST OF ACRONYMS AND ABBREVIATIONS</b>	<b>10</b>
<b>FAQ</b>	<b>11</b>
<b>APPENDIX 1 – EXAMPLE OF A PDA CERTIFICATE</b>	<b>14</b>
<b>APPENDIX 2 – EXAMPLE OF A CERTIFICATE OF PQA</b>	<b>15</b>
<b>APPENDIX 3 – EXAMPLE OF A CERTIFICATE OF MA</b>	<b>16</b>
<b>APPENDIX 4 – EXAMPLE OF A DECLARATION OF CONFORMITY</b>	<b>17</b>

---

While ABS uses reasonable efforts to accurately describe and update the information in this publication, ABS makes no warranties or representations as to its accuracy, currency, or completeness. ABS assumes no liability or responsibility for any errors or omissions in the content of this publication. To the extent permitted by applicable law, everything in this publication is provided “as is” without warranty of any kind, either expressed or implied, including, but not limited to, the implied warranties of merchantability, fitness for a particular purpose, or noninfringement. In no event will ABS be liable for any damages whatsoever, including special, indirect, consequential, or incidental damages or damages for loss of profits, revenue or use, whether brought in contract or tort, arising out of or connected with this publication or the use or reliance upon any of the content or any information contained herein.

---

## INTRODUCTION

The ABS Type Approval Program is a voluntary certification option that verifies a product complies with ABS Rules or recognized industry standards. It is commonly used in the marine and offshore industries to ensure consistency in product design and manufacturing.

The type approval process at ABS consists of two main parts:

- **Product Design Assessment (PDA) Certification** – This involves the engineering review of system or component design and, where applicable, prototype testing.
- **Manufacturing Assessment (MA) Certification** – This involves the approval of the factory and manufacturing processes after a successful in-plant survey audit.

Once both PDA and MA evaluations are carried out successfully, the product will receive a confirmation of type approval, which will be available to download from the ABS online database.

The ABS Type Approval Program operates in tiers as defined in the ABS Rules that reflect the level of review and oversight required:

**Tier 1 Manufacturer's Certification** – Self-certification only, with no involvement or endorsement from ABS.

**Tier 2 PDA** – Engineering/design review by ABS.

**Tier 3 Type Approval** – PDA + Manufacturing Assessment (MA).

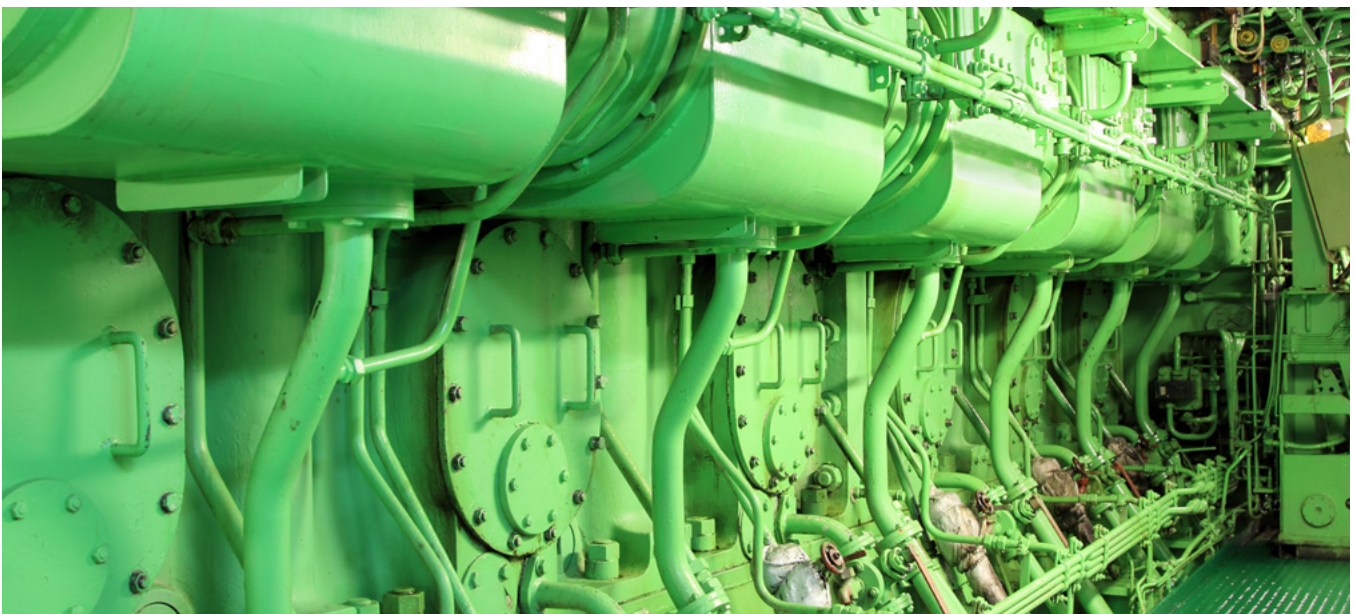
**Tier 4 Product Certification via Product Quality Assurance (PQA)** – PDA + PQA + MA; for mass-produced items requiring Unit Certification (UC), manufacture self-certification of products with ABS endorsement based on successful semi-annual audits. A document package compiled by a nominated quality representative is sent to the local port office for them to review and issue UC.

**Tier 5 Unit Certification at the Plant of Manufacturer** – PDA + UC; highest level, which requires ABS surveyor attendance during Factory Acceptance Test (FAT).

*ABS Rules for Building and Classing Marine Vessels*, Part 4, Chapter 1, Section 1, Tables 1-6, outlines the tier applicable for each type of equipment.

All ABS issued PDA, type approval and PQA are visible to the public via our online database:

[www.eagle.org/ABSEaglePrograms/ta/ta-search.jsp](http://www.eagle.org/ABSEaglePrograms/ta/ta-search.jsp)



---

## PRODUCT DESIGN ASSESSMENT – TIER 2

A PDA is the engineering evaluation of a product by ABS. To be able to issue a PDA:

- ABS reviews drawings, specifications, performance data and test reports to verify compliance with ABS Rules and international standards.
- Evidence of compliance by means of prototype testing may be required.
- Once the engineering review is successfully completed, a PDA Certificate is issued with a validity of five years. This certificate remains valid unless there is a change in the design or a change in the Rules, regulations or standards.
- The product is then listed on the ABS Type Approval website as “Tier 2 – Design Assessed.”

---

## DUPLICATE PDA (PDA-DUP)

The PDA is issued to the original equipment manufacturer (OEM), identified as the entity which has the legal or patent rights to produce the material, component, product or system.

If the OEM chooses to license or allow the manufacture of the product by a secondary entity, then that secondary entity can receive a duplicate PDA (PDA-DUP). To issue such as certificate:

- The OEM must give written authorization.
- The secondary manufacturer must hold a valid MA and is responsible for continued compliance.
- The secondary manufacturer must obtain an MA within 90 days of the PDA-DUP being issued to prevent the PDA-DUP from becoming invalid.

PDA-DUPs are identified with the suffix “-DUP” (e.g., 12-3456789-PDA-DUP) with the validity of the PDA-DUP the same and dependent on the OEM PDA.

This enables global companies with multiple facilities, different design/manufacturing locations or who use third-party manufacturers to use the same design approval.



---

## MANUFACTURING ASSESSMENT (MA) – TIER 3

An MA is a thorough evaluation of a facility and its quality system to ensure that its manufacturing processes complies with the ABS-approved design, allowing for the consistent production of compliant products. To be eligible for an MA, a manufacturer must have a current ISO 9001 quality management system certification – or an equivalent accreditation – and possess a valid PDA or a duplicate PDA already in place.

### SCOPE OF THE AUDIT

The MA Audit is conducted to ensure that the facility maintains compliance with ABS Rules, applicable standards and previously granted PDA approvals. This audit serves as a critical component of ABS' quality assurance framework, verifying that manufacturing processes, documentation and oversight mechanisms are effectively implemented and maintained.

The primary objectives of the audit are to:

- Confirm adherence to ABS-approved procedures and relevant international standards.
- Assess the effectiveness of the facility's quality management system, including ISO 9001 or equivalent certification.
- Verify that documented processes and records support traceability, inspection and testing requirements.
- Ensure that supervisory personnel possess the necessary qualifications and technical competence to oversee manufacturing operations.
- Validate that products manufactured remain consistent with the scope of the granted PDA.

The audit encompasses a comprehensive evaluation of the following areas:

1. **Process Control** – Verification that all manufacturing operations, including fabrication and material handling, are conducted in accordance with documented and approved procedures.
2. **Quality Assurance** – Review of quality management systems, including traceability, inspection and testing protocols, to confirm compliance with ISO 9001 or equivalent certification.
3. **Documentation and Records** – Examination of quality manuals, internal audit reports, corrective action logs and associated documentation to ensure completeness, accuracy and effective implementation.
4. **Competency and Oversight** – Assessment of supervisory technical staff qualifications, organizational structure and oversight mechanisms to confirm continued effectiveness for products covered under the granted PDA.

### ISSUANCE AND VALIDITY

Upon successful completion, ABS issues an MA Certificate, valid for five years. Annual surveillance audits are required to confirm continued compliance.

### INTEGRATION WITH TYPE APPROVAL

Once both the PDA and the MA are current, an ABS Confirmation of Type Approval is available on the public ABS Type Approval database for download. This confirmation authorizes:

1. Use of the ABS "Type Approved" seal
2. Classification of the product under Tier 3 Type Approved

### REQUEST PROCESS

Manufacturers start by submitting a "Request for Manufacturing Assessment Audit" form. Details including ISO 9001 certificate information, PDA reference numbers and facility details are needed. ABS will then schedule and perform the audit.

---

## PRODUCT QUALITY ASSURANCE (PQA) – TIER 4

A PQA program supplements ABS Type Approval by offering additional oversight and ensuring ongoing compliance in the absence of surveyor attendance during production. This program is especially helpful for those products requiring UC.

### ELIGIBILITY AND ENROLLMENT

A valid MA Certificate is required before enrolling in the PQA program. Enrollment starts with the submission of a request to enroll (or continue enrollment) for the ABS PQA program, which can be found on the ABS website. Manufacturers are responsible for UC in accordance with ABS Rules and procedures.

### AUDIT STRUCTURE

PQA audits may be conducted at the same time as MA audits, which include initial, annual or renewal visits. The only exception is a semi-annual periodic audit, which is carried out independently.

During these audits, manufacturers perform internal surveys and testing activities without the presence of an ABS surveyor. All documentation and UC tasks must be handled and documented internally by the manufacturers.

### APPROVAL AND MAINTENANCE

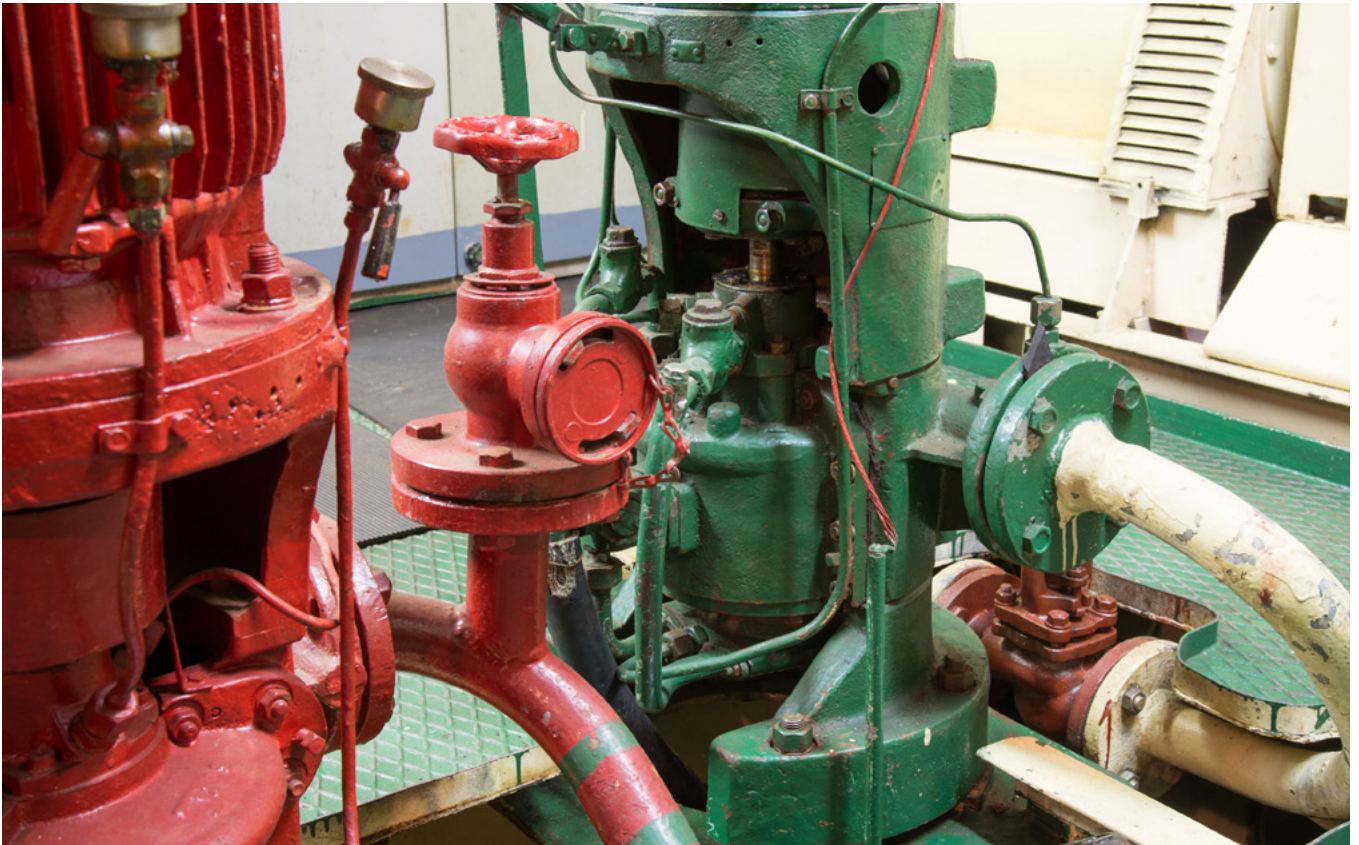
Upon successful completion, ABS issues a PQA Certificate, which is dependent on the validity of the MA Certificate and ongoing compliance with audit requirements. Together, the PDA, MA and PQA create a tiered assurance system that ensures product integrity throughout its life cycle. The PQA Certificate remains valid as long as the MA is in good standing and PQA audits are conducted as scheduled.

### REQUEST PROCESS

Manufacturers start by submitting a “Request for PQA Audit” form found at:

[absinfo.eagle.org/acton/media/16130/abs-type-approval-audits](https://absinfo.eagle.org/acton/media/16130/abs-type-approval-audits)





---

## UNIT CERTIFICATION (UC) – TIER 5

UC confirms that individual units manufactured at a plant comply to vessel-specific ABS Requirements. This is confirmed via surveyor attendance and inspection.

### DESIGN PLAN REVIEW

Before manufacturing starts, a plan review or PDA is conducted in accordance with ABS Rules, which may include referencing recognized standards. For products that have received type approval, an ABS PDA Certificate is generally issued under the type approval program.

### IN-PLANT SURVEYS AND TESTING

Surveyor attendance is essential throughout key stages of fabrication at the manufacturer's plant, ensuring that ABS surveyors are present to oversee the process. They conduct witness inspections and material testing in accordance with ABS Rules, capturing each phase of production and fabrication to maintain quality and compliance.

Upon successful verification, ABS surveyor issues a survey report, thereby validating that each unit adheres to applicable ABS Requirements. In cases where a product falls under the PQA type approval program, the direct presence of a surveyor during unit manufacturing may not be required. Nonetheless, UC is still granted, based on the manufacturer's approved quality management systems and internal testing which are typically managed and reported by the manufacturer themselves.

### WORLDWIDE CLIENT NUMBER (WCN)

To protect client's information and intellectual property rights, we are specific on the owner of the design and rights of the facility manufacturing the product. We control the assignment of the PDA, PDA-DUP and MA through the WCN. The MA must be assigned to the same entity with the same WCN for the type approval database to recognize the product as type approved.

---

## NEW PDA APPLICATION PROCESS

To submit a new PDA Application:

- Submit a request for type approval online at [www.eagle.org/en/rules-and-resources/forms/pda-requests.html](http://www.eagle.org/en/rules-and-resources/forms/pda-requests.html)
- Choose new PDA to start.
- Select your nearest ABS engineering office.
- The request is non-binding, and the ABS engineer will revert with an offer or quotation. No fees will be incurred until ABS issues and you accept a quotation.
- Upon acceptance of the quotation, a new project will be opened in the ABS MyFreedom™ Client Portal.

### PDA REVIEW

- Once ABS opens the project, drawings, specifications, performance data and design and test reports can be submitted for ABS review.
- Upon completion of the review, ABS will issue a PDA Certificate.

### OPTIONAL – PDA-DUP

If production will take place at a facility other than the OEM, request a PDA-DUP.

- Submit another request for type approval online at [www.eagle.org/en/rules-and-resources/forms/pda-requests.html](http://www.eagle.org/en/rules-and-resources/forms/pda-requests.html)
- The secondary facilities must have a WCN. If this is known at the time of submitting the PDA-DUP request. Please enter the WCN in the comment section form. If not, the ABS engineer will contact you regarding the creation of the new WCN.



---

## PDA REVALIDATION PROCESS

After five years, or if the applicable Rules change, or if there are changes in the product design, a PDA revalidation will be required. This ensures that the product remains compliant over time, especially if there have been changes in design, manufacturing or regulations.

### APPLICATION

- Submit a request for type approval online at [www.eagle.org/en/rules-and-resources/forms/pda-requests.html](http://www.eagle.org/en/rules-and-resources/forms/pda-requests.html)
- Choose PDA revalidation to start.
- Select your nearest ABS engineering office.
- The request is non-binding and the ABS engineer will revert with an offer or quotation. There will be no fees until ABS issues and you accept a quotation.
- Before the revalidation process can be initiated, you will be asked if your product has had any design changes or medium failure rates in the last five years. If your product has had no design changes or medium failure rates, you will need to confirm this with a declaration of conformity. This signed statement is required from the owner of the original PDA to generate the revalidation. A sample of a declaration of conformity can be found in Appendix 3 of this document.
- Upon acceptance of the quotation, a new project will be opened in the ABS MyFreedom™ Client Portal.

### PDA REVIEW

Once ABS opens the project, drawings, specifications, performance data, and design and test reports can be submitted for review.

- ABS will issue a PDA draft for review and approval before issuing the PDA Certificate.
- ABS issues the PDA Certificate upon successful completion of the engineering review.

### OPTIONAL – PDA-DUP

If production will take place at a facility other than the OEM, request a PDA-DUP.

- Submit another request for type approval online at [www.eagle.org/en/rules-and-resources/forms/pda-requests.html](http://www.eagle.org/en/rules-and-resources/forms/pda-requests.html)
- The secondary facilities must have a WCN. If this is known at the time of submitting the PDA-DUP request. Please enter the WCN in the comment section form. If not, the ABS engineer will contact you regarding the creation of the new WCN.

If the product has type approval, annual audit arrangements to be made with ABS.

---

## PDA REVISION

A PDA revision is used when the existing PDA Certificate needs to be updated due to minor changes that do not affect the product's compliance with ABS Rules. PDA revision will not impact the expiry date of the original PDA.

### APPLICATION

- Submit a request for type approval revision online at [www.eagle.org/en/rules-and-resources/forms/pda-requests.html](http://www.eagle.org/en/rules-and-resources/forms/pda-requests.html)
- Choose PDA revision to start.
- Select nearest ABS engineering office.
- The request is non-binding, and the ABS engineer will revert with an offer or quotation. There will be no fees until ABS issues and you accept a quotation.
- Upon acceptance of the quotation, a new project will be opened in the ABS MyFreedom™ Client Portal.

### PDA REVIEW

- Once ABS opens the project, drawings, specifications, performance data and design and test reports can be submitted for review.
- Upon completion of the review, ABS will issue a PDA Certificate.
- ABS issues an updated PDA Certificate with a new number having a "-1" after it.

### OPTIONAL – PDA-DUP

If PDA has a PDA-DUP, then the PDA-DUP also needs to be revised. To have a PDA-DUP revised:

- Submit another request for type approval online at [www.eagle.org/en/rules-and-resources/forms/pda-requests.html](http://www.eagle.org/en/rules-and-resources/forms/pda-requests.html)
- The secondary facilities must have a WCN. If this is known at the time of submitting the PDA- DUP request, the WCN can be entered in the comment section form.

### REQUEST FOR MA

- After PDA is issued, apply for an MA through the local ABS survey office in the ABS MyFreedom™ Client Portal.
- ABS surveyor conducts an in-plant audit of the facility.
- The MA must be performed within 90 days of the PDA-DUP being issued.
- A MA Certificate issued if audit requirements are met.

### CONFIRMATION OF TYPE APPROVAL

- ABS publishes the product as fully Type Approved on its database.
- The ABS Type Approval seal may be used, subject to ABS seal use conditions. Rules and Requirements.

The PDA process and the Rules applicable to equipment under certification can be accessed for free through the ABS Rules and Guides portal.

Specifically, the latest edition of the ABS Marine Vessel Rules (MVR)

To access these Rules:

1. Visit the ABS Rules and Guides page at [www.eagle.org](http://www.eagle.org).
2. Search for the "Rules for Building and Classing Marine Vessels - ####."

---

## VALIDITY OF CERTIFICATES

- PDA Certificate: Five years
- MA Certificate: Five years, subject to annual audits
- PQA Assessment: Five years, subject to semi-annual audits
- Confirmation of Type Approval: Remains valid as long as both the PDA and MA are valid

---

## WORLDWIDE CLIENT NUMBERS (WCN)

ABS assigns each client a unique WCN. This WCN is used to track PDAs. An ABS WCN can be obtained via a local surveyor or engineering office. Additionally, for each PDA-DUP location, a separate WCN must also be created for the secondary location.

---

## ABS MYFREEDOM™

During the review, ABS uses the ABS MyFreedom™ Client Portal. Through the application, documentation can be submitted and progress tracked. Revised drawings can be uploaded if required. Details are available online at:

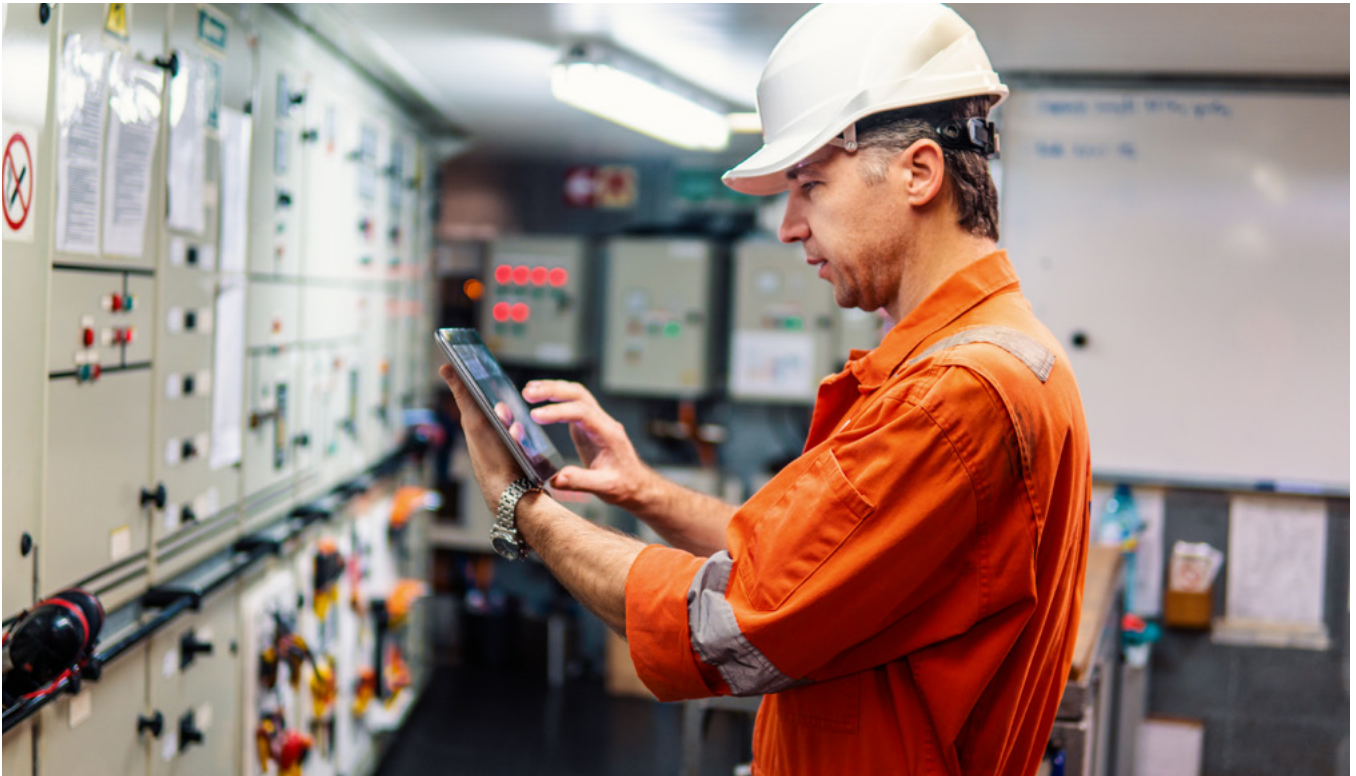
[www.eagle.org/en/abs-eagle-technical-support.html](http://www.eagle.org/en/abs-eagle-technical-support.html)

---

## KEY BENEFITS OF ABS TYPE APPROVAL

- Simplifies the approval process across multiple projects
- Reduces duplication of engineering reviews and surveys
- Enhances market visibility by being listed in ABS' online database
- Recognized worldwide by regulators and industry





---

## LIST OF ACRONYMS AND ABBREVIATIONS

<b>ABS</b>	<b>American Bureau of Shipping</b> – Classification society providing marine and offshore certification
<b>MA</b>	<b>Manufacturing Assessment</b> – Audit of a facility to ensure it can produce ABS-approved designs
<b>MC</b>	<b>Manufacturer’s Certification</b> – Self-certification without ABS involvement
<b>MVR</b>	<b>Marine Vessel Rules</b> – <i>ABS Rules for Building and Classing Marine Vessels</i>
<b>PDA</b>	<b>Product Design Assessment</b> – Engineering/design review of a product by ABS
<b>PDA-DUP</b>	<b>Duplicate Product Design Assessment</b> – Extension of a PDA for a secondary manufacturing site
<b>PQA</b>	<b>Product Quality Assurance</b> – Certification for mass-produced items with semi-annual audits
<b>TA</b>	<b>Type Approval</b> – Certification combining PDA and MA
<b>UC</b>	<b>Unit Certification</b> – Highest level of certification requiring ABS surveyor presence during production
<b>WCN</b>	<b>Worldwide Client Number</b> – Unique identifier for ABS clients used for tracking and billing

---

## FAQ

### **I have received a PDA and not a type approval. Is this equivalent?**

As mentioned in the beginning section of this publication, the ABS Type Approval is subject to tier levels. The PDA Certification is sufficient for many manufacturers, subject to the tier level of the type approval program for their equipment.

However, should you wish to receive an ABS Confirmation of Type Approval, you may apply for Manufacturing Assessment Certification after the PDA Certification is complete. This will be surplus to requirements if your product is only Tier 2. We actively encourage and support those companies who wish to exceed the requirements.

### **I have been issued a PDA but I now want ABS Type Approval, is this possible?**

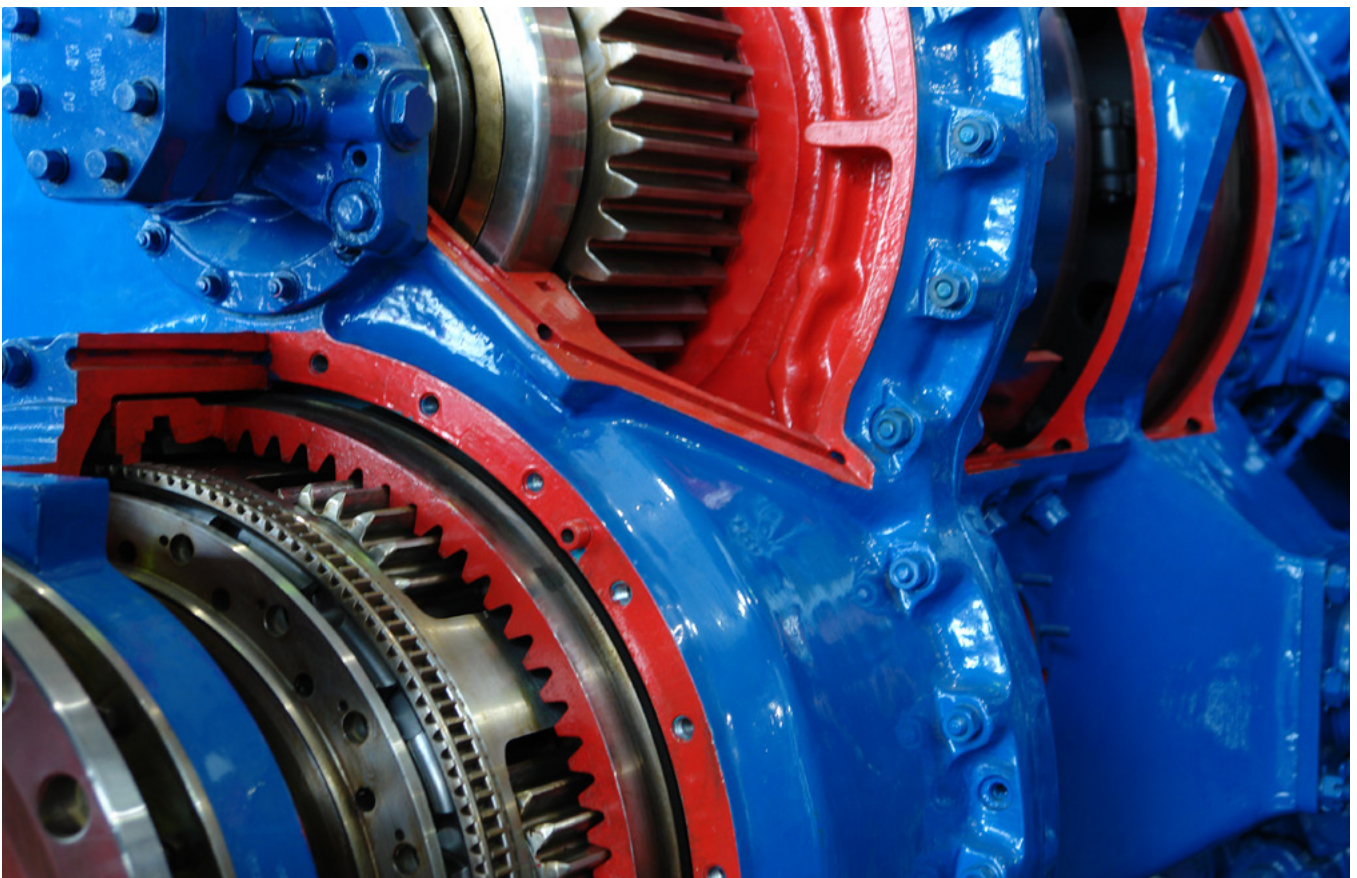
Yes, the tier level of your product is only the minimum. If you wish to ascertain a higher tier level, such as type approval Tier 3, then this is possible. Please contact your local ABS surveyor office.

### **My product is Tier 5; can I still have an MA and type approval?**

If your product is Tier 5, it requires UC. Since the product is verified during the manufacture at the manufacturing sites, a manufacturing assessment is not required. However, if you would like to obtain type approval, you can optionally choose to undergo a manufacturing assessment. This will not affect the UC requirement but will list the product as type approved.

### **If my product falls under Tier 5 – UC, do I need a MA?**

No, if your product falls under Tier 5 – UC, then you do not need an MA, as the equipment is inspected at the plant before it is installed, but you need a PDA. An MA is still an option for you, and it gives your equipment type approval status in the database.



### **Are my manufacturing audit and engineering review costs combined together?**

The engineering design review fee does not include any manufacturing audit cost. The manufacturing audit cost is issued separately by the local ABS surveyor office.

### **What does PDA Limited mean?**

After the expiration date, the PDA automatically changes to PDA Limited status and remains in this status for one year. A product with a PDA Certificate in PDA Limited status is valid for installation on ABS units that are either already in existence or under contract for construction as of the effective date of the ABS Rules and standards in place at the time of the PDA issuance. This is pending technical revalidation and the issuance of a new certificate.

### **I didn't get a notification about my PDA expiring.**

In our ABS database, we have the requirement to add a minimum of two contact people for a PDA. If you would like to check the contacts or have the contacts updated, please contact your review engineer during the PDA process, and they will be able to get the details updated for you.

### **I'm not sure what rules and requirements my equipment will need to be designed to?**

In this case, the first step is to consult the [ABS Rules Manager](#). You can search for your product on this website to find the relevant Rules and regulations. If you still have questions, please contact your local engineering office; they can connect you with a subject matter expert. While a comprehensive review is necessary to ensure all applicable Rules are followed, the ABS engineer can provide you with guidance. Alternatively, you can initiate the PDA process, and your ABS review engineer will assist you as they evaluate your equipment.

### **We are moving the manufacturing location. What should we do?**

In this instance, the simplest approach is to create a new WCN with the new manufacturing address. Then request a PDA-DUP for the new manufacturing location. Once the main PDA expires, request a transfer of intellectual property as part of the revalidation. This will allow some overlap from the old site to the new site. Alternative approaches are available please contact your local engineering office.

### **Our address is changing; can I move my PDA?**

Yes, please contact your local engineering office who will be able to assist. Your PDA will remain valid as we change over the address.

### **When should I apply for a PDA revalidation?**

We normally request between 2 and 3 months before the expiration of the PDA.

### **We are changing the ownership of the intellectual property of a product issued with a PDA. What actions do we need to take to align with the ABS approval process?**

Please contact your local engineering office for assistance. In such cases, the current PDA is usually withdrawn, and a new PDA is created. ABS will need to see a signed document from the original company explaining that intellectual property is being transferred to a new owner, and new documentation with the new company details on them to be submitted as part of the new PDA process. A new WCN will need to be created for the new company if one isn't already created.

### **I have type approval with another class society. Do I need ABS Type Approval as well?**

Yes, if you wish to use the equipment in question on an ABS-classed vessel. It is important to note that each classification society interprets international Rules and Requirements differently and has its own set of standards and Requirements. Because of these differences, if you aim to achieve ABS Type Approval, you will need to provide the same documents that were used for the approval from the other classification society. This ensures that ABS can conduct its own design approval based on the information already evaluated.

**The standards used for the testing of my products has been updated. Do I need to update my test reports?**

Yes, ABS can only verify test reports of those that are conducted to the latest standards. If your test reports indicate an outdated standard, you have two options. You can either have your equipment tested according to the latest standards, or if the updated standards do not specifically impact your equipment, you will need to provide a gap analysis. This analysis should explain the differences between the standard listed on your test reports and the updated standard, as well as how those differences do not affect your equipment.

**I have my own test laboratory. Can I use that to show compliance with any Rules?**

Yes, however, your laboratory must obtain independent accreditation from a national accreditation body, and we will need that certificate. If the independent accreditation is accepted, you can use your own laboratory to demonstrate compliance. If your laboratory does not meet this criteria, then an ABS surveyor must witness the tests and stamp the test reports. Please contact your local surveyor to arrange a date for the testing if required.

**What happens if PDA is not granted, or I need further testing?**

ABS is committed to supporting you and your product throughout the certification process. We will inform you of any additional testing that may be required. If you need more time to conduct further testing, we can pause the review process. However, if the pause extends beyond six months, please contact the review engineer directly. There are many options available, and we will work with you to provide the best support possible.

**I am working on behalf of another company; can I arrange their PDA certification?**

Please note that on the PDA application, both your company and the holder of the PDA will need to have a valid WCN.

**I have certificates from other class societies do I need to submit them to ABS?**

We cannot accept certificates from other class societies as evidence for compliance with ABS Rules and regulations.

**Can I submit documents via email?**

The ABS Freedom™ platform is to be used for submission of documents even after the project has started. This ensures that all relevant engineers are automatically informed of the new documents.

**How to revise your drawings**

You can make revisions using the ABS Freedom™ platform. First, select the drawing you have currently submitted, and then click the "Revise" button. All engineers involved in your project will automatically be notified of the revision. Please avoid submitting a new drawing for a revision of an existing one, as this will complicate the review process.

**Can I delete drawings I've submitted?**

Yes, via the ABS Freedom™ portal. All engineers working on your case will be notified.

APPENDIX 1 – EXAMPLE OF A PDA CERTIFICATE

	CERTIFICATE NUMBER	YY-TASK NUMBER-PDA
	EFFECTIVE DATE	01-Jan-2024
	EXPIRY DATE	31-Dec-2028
	ABS TECHNICAL OFFICE	ABS Technical Office

CERTIFICATE OF  
**Product Design Assessment**

This is to certify that a representative of this Bureau did, at the request of  
**COMPANY NAME**  
located at  
**COMPANY ADDRESS**

assess design plans and data for the below listed product. This assessment is a representation by the Bureau as to the degree of compliance the design exhibits with applicable sections of the Rules. This assessment does not waive unit certification or classification procedures required by ABS Rules for products to be installed in ABS classed vessels or facilities. This certificate, by itself, does not reflect that the product is Type Approved. The scope and limitations of this assessment are detailed on the pages attached to this certificate.

**Product:** Product Name  
**Model:** Product Model  
**Endorsements:**  
**Tier:** 3 - Type Approved, unit certification not required

**DRAFT**

This Product Design Assessment (PDA) Certificate remains valid until 09/Oct/2028 or until the Rules and/or Standards used in the assessment are revised or until there is a design modification warranting design reassessment (whichever occurs first).

Acceptance of product is limited to the "Intended Service" details prescribed in the certificate and as per applicable Rules and Standards.

This Certificate is valid for installation of the listed product on ABS units which exist or are under contract for construction on or previous to the effective date of the ABS Rules and standards applied at the time of PDA issuance. Use of the Product for non-ABS units is subject to agreement between the manufacturer and intended client.

American Bureau Of Shipping  
Engineer Name, Engineer/Consultant

NOTE: This certificate evidences compliance with one or more of the Rules, Guides, standards or other criteria of ABS or a statutory, industrial or manufacturer's standards. It is issued solely for the use of ABS, its committees, its clients or other authorized entities. Any significant changes to the aforementioned product without approval from ABS will result in this certificate becoming null and void. This certificate is governed by ABS Rules 1-1-A3/5.9 Terms and Conditions of the Request for Product Type Approval and Agreement (2010)

Certificate of Product Design Assessment Rev.3 of 1 Page 1

Sensitivity: Internal & Restricted

ABS Type Approval Product Design Assessment, ENG-PRI-00073, ENG-ATT-00797 Revision 2 Page 1 of 1

APPENDIX 2 – EXAMPLE OF A CERTIFICATE OF PQA



<https://ABSCert.Eagle.org>

Certificate Number  
 Effective Date  
 Expiry Date  
 ABS Port Office

CERTIFICATE OF  
**Product Quality Assurance**

This is to certify that the Undersigned evaluated the manufacturing quality procedures of

located at

attend its facilities on the date and location stated, in order to carry out an audit of its quality system procedures. The system is considered to be in compliance with the ABS Quality Assurance Certificate criteria, subject to continued compliance with the most recent ISO 9000 Standard based on semi-annual audits by a representative of ABS, and periodic review and renewal of this Certificate, and alignment with Manufacturer Assessment Certificate validity.

Products covered by valid PDA(s)

**DRAFT**

This Certificate is manufacturer and location specific and is subject to annual audits. Consult the ABS Type Approval website to confirm the continued validity of this certificate and the status of products.

The ABS Office issuing the certificate is to be kept updated with changes to the production methods, quality control systems, products and models and any changes made.

Surveyor

NOTE: This Certificate evidences compliance with one or more of the Rules, guides, standards or other criteria of American Bureau of Shipping and is issued solely for the use of the Bureau, its committees, its clients or other authorized entities. This Certificate is a representation only that the structure, item of material, equipment, machinery or any other item covered by this Certificate has met one or more of the Rules, guides, standards or other criteria of American Bureau of Shipping as of the date of issue. Parties are advised to review the Rules for the scope and conditions of classification and to review the survey records for a fuller description of any restrictions or limitation on the vessel's service or surveys. The validity, applicability and interpretation of this Certificate is governed by the Rules and standards of American Bureau of Shipping who shall remain the sole judge thereof. Nothing contained in this Certificate or in any notation made in contemplation of this Certificate shall be deemed to relieve any designer, builder, owner, manufacturer, seller, supplier, repairer, operator or other entity of any warranty express or implied.

APPENDIX 3 – EXAMPLE OF A CERTIFICATE OF MA



Certificate Number

Effective Date

Expiry Date

ABS Port Office

Company's Website

CERTIFICATE OF Manufacturing Assessment

This is to certify that the Undersigned evaluated the manufacturing quality procedures of

located at

The quality monitoring systems during production were verified to reflect the specific surveys, required by the ABS Rules, Guides, the associated Specifications and Standards for the manufacture of

Products covered by valid PDA(s)

DRAFT

This manufacturer presented a sample or specimen of the product, representative of the "type" approved for the purpose of verifying that the "type" has been manufactured in conformance with the Manufacturer's Product Design Assessment(s).

This Certificate is manufacturer and location specific and is subject to annual audits. Consult the ABS Type Approval website to confirm the continued validity of this certificate and the status of products.

The ABS Office issuing the certificate is to be kept updated with changes to the production methods, quality control systems, products and models and any changes made.

Surveyor

Annual Endorsement

First

Second

Third

Fourth

Surveyor

WO and Date

NOTE: This Certificate evidences compliance with one or more of the Rules, guides, standards or other criteria of American Bureau of Shipping and is issued solely for the use of the Bureau, its committees, its clients or other authorized entities. This Certificate is a representation only that the structure, item of material, equipment, machinery or any other item covered by this Certificate has met one or more of the Rules, guides, standards or other criteria of American Bureau of Shipping as of the date of issue. Parties are advised to review the Rules for the scope and conditions of classification and to review the survey records for a fuller description of any restrictions or limitation on the vessel's service or surveys. The validity, applicability and interpretation of this Certificate is governed by the Rules and standards of American Bureau of Shipping who shall remain the sole judge thereof. Nothing contained in this Certificate or in any notation made in contemplation of this Certificate shall be deemed to relieve any designer, builder, owner, manufacturer, seller, supplier, repairer, operator or other entity of any warranty express or implied.

---

## APPENDIX 4 – EXAMPLE OF A DECLARATION OF CONFORMITY

Date:

Subject: Declaration of Conformity

In regard to existing PDA certificate number (XX-LDXXXXXX-PDA), I declare that there are no changes to the products covered by the existing certificate and that there have been no design changes or field failures to said products.

Best Regards,

Name

(Title)

Signature

---

# CONTACT INFORMATION

## **NORTH AMERICA REGION**

1701 City Plaza Dr.  
Spring, Texas 77389, USA  
Tel: +1-281-877-6000  
Email: [ABS-Amer@eagle.org](mailto:ABS-Amer@eagle.org)

## **SOUTH AMERICA REGION**

Rua Acre, n° 15 - 11° floor, Centro  
Rio de Janeiro 20081-000, Brazil  
Tel: +55 21 2276-3535  
Email: [ABSRio@eagle.org](mailto:ABSRio@eagle.org)

## **EUROPE REGION**

111 Old Broad Street  
London EC2N 1AP, UK  
Tel: +44-20-7247-3255  
Email: [ABS-Eur@eagle.org](mailto:ABS-Eur@eagle.org)

## **AFRICA AND MIDDLE EAST REGION**

Al Joud Center, 1st floor, Suite # 111  
Sheikh Zayed Road  
P.O. Box 24860, Dubai, UAE  
Tel: +971 4 330 6000  
Email: [ABSDubai@eagle.org](mailto:ABSDubai@eagle.org)

## **GREATER CHINA REGION**

World Trade Tower, 29F, Room 2906  
500 Guangdong Road, Huangpu District,  
Shanghai, China 200000  
Tel: +86 21 23270888  
Email: [ABSGreaterChina@eagle.org](mailto:ABSGreaterChina@eagle.org)

## **NORTH PACIFIC REGION**

11th Floor, Kyobo Life Insurance Bldg.  
7, Chungjang-daero, Jung-Gu  
Busan 48939, Republic of Korea  
Tel: +82 51 460 4197  
Email: [ABSNorthPacific@eagle.org](mailto:ABSNorthPacific@eagle.org)

## **SOUTH PACIFIC REGION**

7 Science Park Drive  
#09-21/32 Geneo, Singapore 119316  
Tel: +65 6276 8700  
Email: [ABS-Pac@eagle.org](mailto:ABS-Pac@eagle.org)

© 2026 American Bureau of Shipping.  
All rights reserved.

