



# SURVEY MANAGEMENT PROGRAM

Technology and expertise combined to manage and protect your assets

## BENEFITS



A designated ABS representative for your offshore assets



Risk management for monitoring and controlling



Active listening to proactively solve problems and overcome challenges



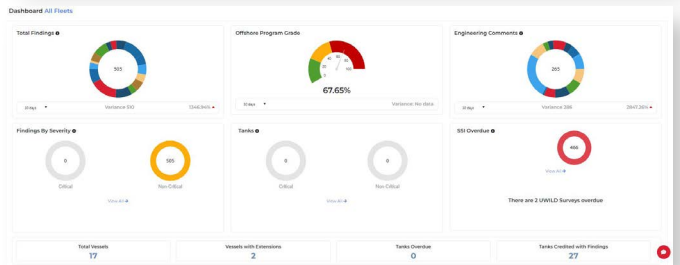
Centralized communications



Dashboard report methodologies

We know the challenges of complying with stricter International and Coastal State regulation while completing all due inspections and repairs within the Current Class Survey Cycle.

The Survey Management Program (SMP) is a branch in ABS focused on giving both **personalized solutions and insights toward an improved Asset status.**



Sample reporting

## HOW IT WORKS

1

ABS performs an in-depth review to understand the current asset profile, life cycle status, and overall class and statutory status.

2

Together, ABS and the client set an action plan with specific and achievable goals and milestones.

3

ABS proactively monitors the evolution of the agreed plan, collaborating closely with each client to swiftly address deviations or issues, ensuring prompt adjustments to the plans as needed.

### WORLD HEADQUARTERS

1701 City Plaza Dr., Spring, TX 77389 USA | +1 (281) 877-6000 | ABS-WorldHQ@eagle.org | [www.eagle.org](http://www.eagle.org)

© 2024 American Bureau of Shipping. All rights reserved.